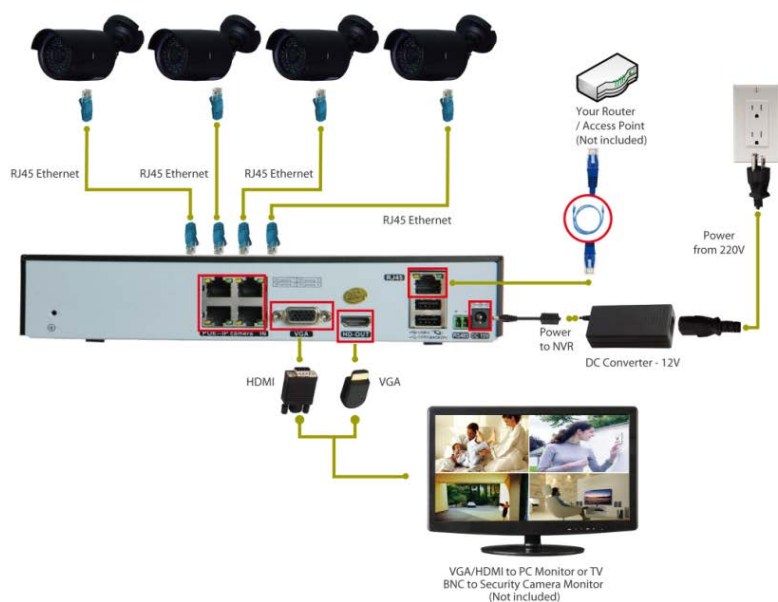


Quick Setup Guide

I Congratulations on your new purchase

This quick setup guide will show you how to quickly set up your system for local and remote surveillance. For complete instructions, detailed manuals, or how to set your DVR, please check within CD which is included in the package.

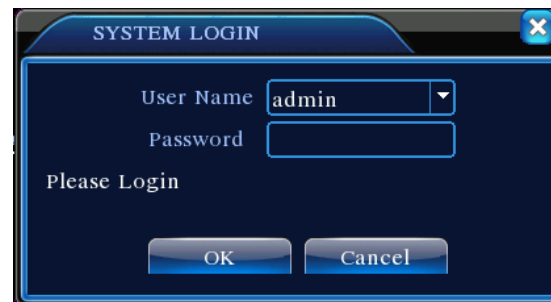


Connecting your system

1. Link up the cameras and RJ45 connectors with the 15M & 25M video cables
2. Connect your power adapter with the power cable
3. Plug the adapter to your power source
4. Wire the NVR box with your monitor using a VGA/HDMI cable (not included)
5. Connect the NVR box with your Router/AP using a network cable (NOT included)

II System Login

Power up and log in to your DVR with the default user name "admin" and no password. Wait a few seconds and you will see four channels of live video.



For security purposes: If the password was input wrongly three times, the alarm will start. If for five times, the account will be locked. (Through reboot or after half an hour, the account will be unlocked automatically).

Note: Please change the password after first login.

III Mobile Viewing (Take iPhone/iPad for example)

Step1. DVR configuration: go to [Main Menu] - [System] - [Network], enable DHCP

Step2. Go to [Main Menu] - [info] - [version] - [NAT Status], make sure it is CONNECTED

Step3. Install mobile app to your cell phone, the app "XMeye" can be downloaded from Apple Store

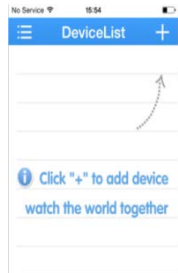
Step4. Run the app "XMeye" through "+" (See pic 1) - choose [Manually add]-

SerialNum: : Please enter the P2P account.

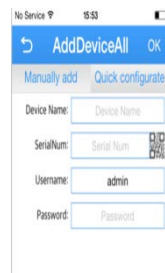
Note: The way to search P2P account: Main Menu--INFO--Version--SerialNo

Step5: Tab on the “OK” button on your mobile, no password needed. Further tab on the device to view. See pic 2.

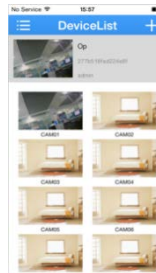
After adding the device, you will see Pic 3, choose the channel you want to view, and the preview image will be displayed



Pic1:



Pic2:



Pic:3

IV Contact us

If you have any inquiries regarding DVR setup or troubleshoot, please feel free to contact us via email address listed below:

<http://www.evolveo.eu/en/support>

EVOLVEO

Detective D04

Quick Setup Guide

(For detailed instruction, please look for the CD disk or contact us via email)

www.evolveo.com

