

# EVOLVE® Jade 3 LTE

Elegant outdoor antenna for digital and analog TV reception



## Introduction:

This is a special designed new concept antenna for digital outdoor analog and terrestrial HDTV broadcasting reception. It is the best solution for home reception and digital portable TV reception. Complete accessories are included for wall or pole mounting. With the anti-UV and water proof housing.

## Technical Data:

- Frequency range: VHF:87.5-230MHz; UHF:470-790MHz
- Receiving Range: AM/FM/VHF/UHF
- Max Output Level: 100 dBuV max
- Impedance: 75Ω
- Noise Figure: < 4.5dB
- Power Supply: DC12V

## Included in Package:

Before start your installation, please check the contents.

1. Antenna main unit
2. Power supply unit
3. Power adapter
4. 8 meters + 2 meters TV coaxial cable



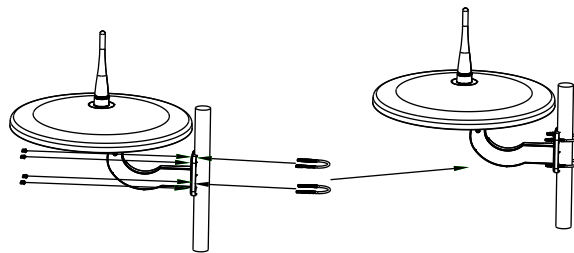
## Product Features:

- Anti-UV coating and waterproof design.
- Lightweight, compact size and easy to install.
- LED indicator light is to check if the antenna is well powered and connected.
- For both analog and digital HDTV signal reception
- Built-in high gain and low noise preamplifier
- With dipole inbuilt for the excellent VHF & UHF band signal reception.
- Specially Compatible with HDTV of various digital terrestrial signal (DVB-T; ISDB-T; DMB-T/H; ATSC)

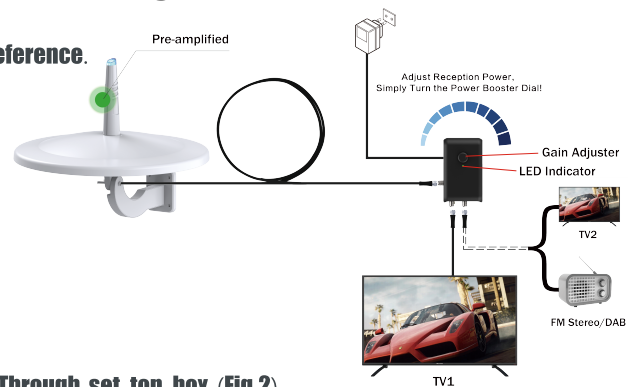
## Mounting the antenna:

(Fig.1) Use the screw to fix the antenna on the pole

Fig.1



Installation: Please take following (Fig.2) installation instruction for reference.



Installation: Connected Through set-top-box (Fig.2)

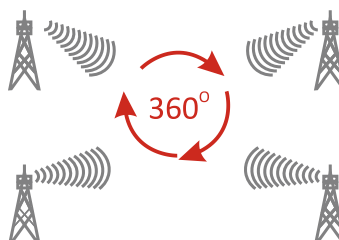
Note: This antenna can receive omni-directional signal. There is no need to adjust the antenna as it can get clear TV picture in any position, please organize the coaxial cable for neat, tidy and safety.

## Operation Instruction:

Note: For the best reception, please check the following conditions

1. Keep the antenna away from the sources of interference: keep the antenna away from those big power consumption devices, such as air conditioner, elevator, hair dryer and microwave oven...etc.
2. Place the antenna near windows when use the antenna in indoor environment.
3. Install the antenna as high as possible: in digital terrestrial reception, if there are some interceptions between antenna and transmission tower, it will cause the signal loss temporary. So if the antenna is installed as possible, those interceptions will be reduced.

360° direction non-adjustment reception



# EVOLVEO Jade 3 LTE

Elegant outdoor antenna for digital and analog TV reception



Disposal: The symbol of crossed out container on the product, in the literature or on the wrapping means that in the European Union all the electric and electronic products, batteries and accumulators must be placed into the separate salvage after finishing their lifetime. Do not throw these products into the unsorted municipal waste



## DECLARATION OF CONFORMITY

Hereby, the company Abacus Electric, s.r.o. declares that the EVOLVEO Jade 3 LTE is in compliance with the requirements of the standards and regulations, relevant for the given type of device.

Find the complete text of Declaration of Conformity at <ftp://ftp.evolveo.com/ce>

Dovozce / Dovožca / Importer / Importőr  
Abacus Electric, s.r.o.  
Planá 2, 370 01, Czech Republic

Výrobce / Výrobca / Manufacturer / Gyártó  
Naxya Limited  
No.5, 17/F, Strand 50, 50 Bonham Strand, Sheung Wan, Hong Kong  
Made in China

Copyright © Abacus Electric, s.r.o.  
[www.evolveo.com](http://www.evolveo.com)  
[www.facebook.com/EvolveoCZ](http://www.facebook.com/EvolveoCZ)

All rights reserved.  
Design and specification may be changed without prior notice.